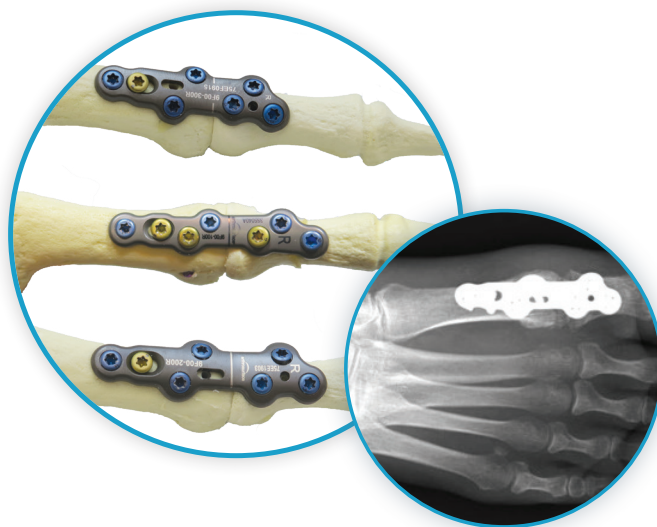


# CheckMate®

## MTP Arthrodesis System

### When it's your last move...

- Low profile & anatomically pre-contoured plates for ease of use and reproducible outcomes
- High stiffness anodized plate for maximum stability
- Latest technology in locked compression plates, combining the best of internal and external fixation
- Multiple plate sizes for primary or revision cases



### Make Your Last Move Count

With the CheckMate® plate you also get built in "Surgical Speed Elements"



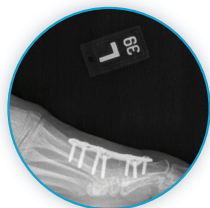
Custom low profile elevator to gain exposure of metatarsal head and phalangeal base. Includes built in templates for sizing purposes



Plates are provided sterile, in right and left configurations with lengths from 45mm to 55mm



Metatarsal and Phalangeal Reamers designed to prevent over-reaming and shortening of bones



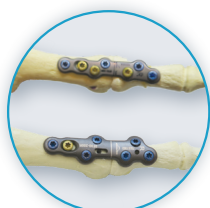
3.0mm and 3.5mm bailout screws are available in lengths ranging from 8mm to 24mm



Tack pins provide temporary fixation to stabilize bone plate over the MTP Joint



Compression clamp technology built into the plate allows up to 3mm compression across the MTP joint



Multiple plate options with either a combination of locking and non-locking holes or all-locking variable angle holes for primary or revision cases



Variable angle locking holes allow desired orientation of screw placement

**Anika Therapeutics, Inc.**

28 Forge Parkway, Franklin, MA 02038  
1-508-520-3003 | [stayactive@anika.com](mailto:stayactive@anika.com)

[www.anika.com](http://www.anika.com) | Anika. Restore Active Living.® | Stay Active®

This document and information is intended for markets where regulatory approval has been granted.  
Anika, Arthrosurface, CheckMate, Stay Active, and Restore Active Living are trademarks and/or registered trademarks of  
Anika Therapeutics, Inc. and its affiliates in certain jurisdictions.  
System designed and manufactured in the USA | Printed in the USA  
©2024 Anika Therapeutics, Inc. All rights reserved.

AML-900-630 REV 01

