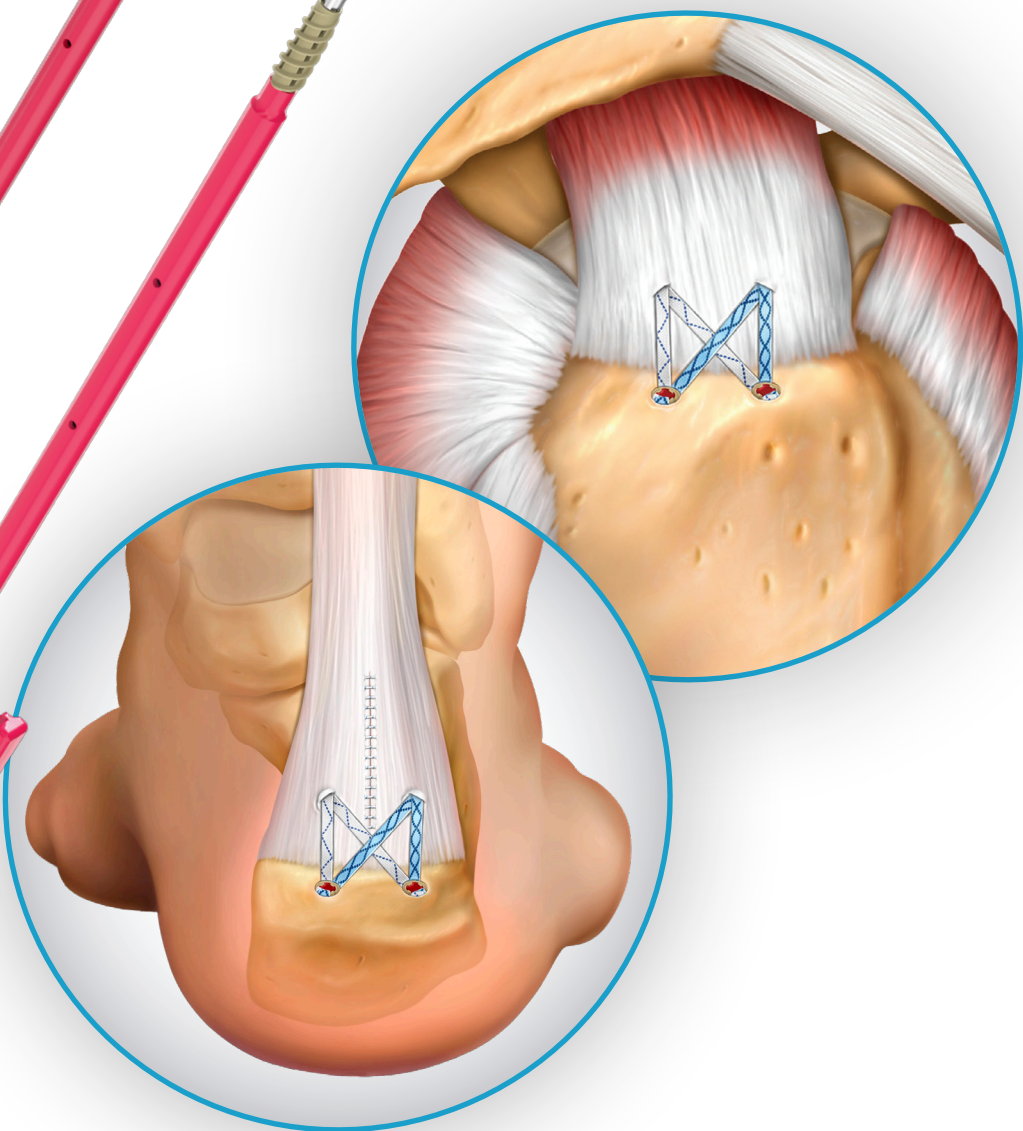
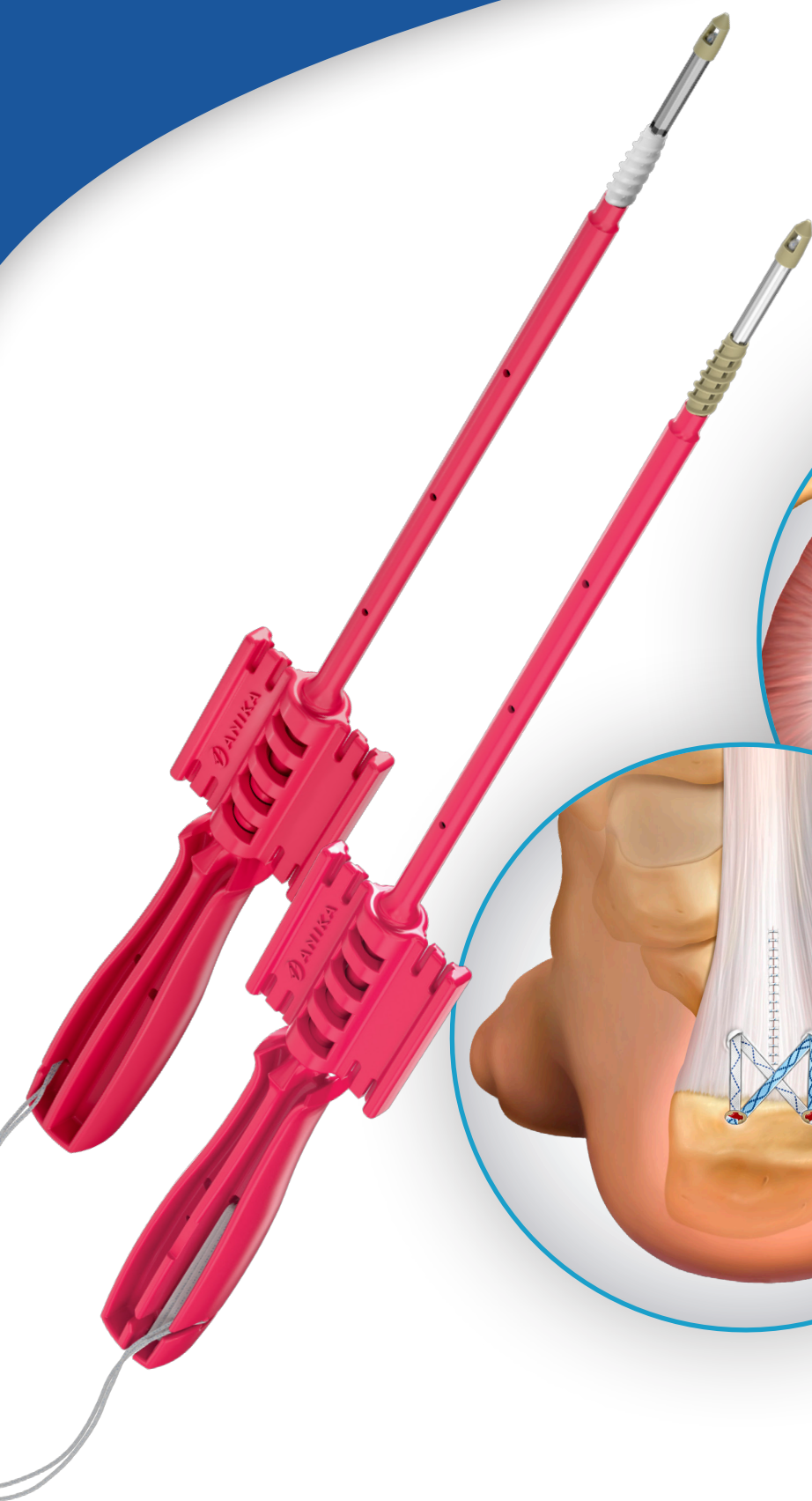




X-Twist™ Fixation System

Product Brochure



Simply Versatile

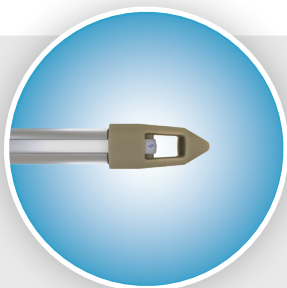
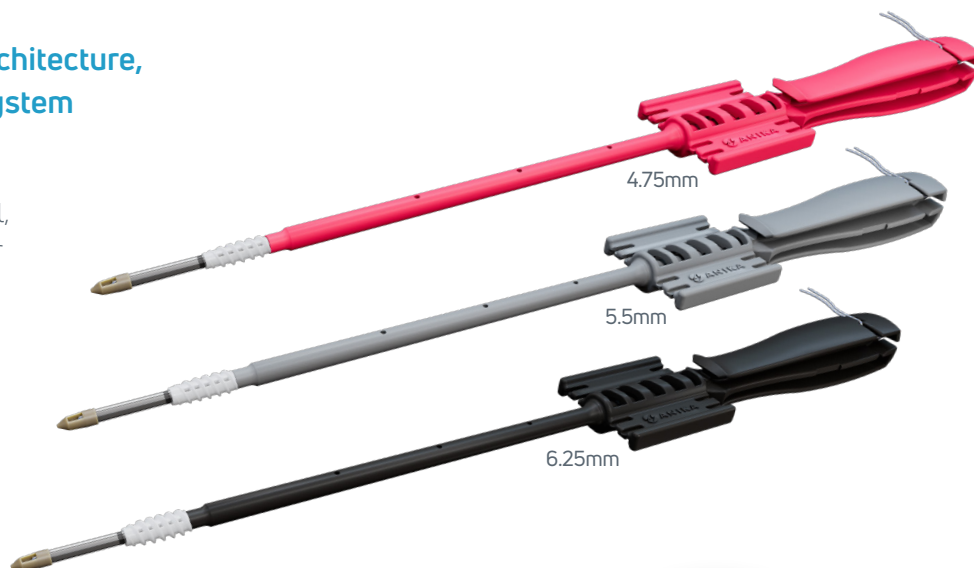
*A system designed for reproducibility
and confidence in soft tissue repair*

X-Twist Fixation System

The X-Twist™ is a knotless, open architecture, and fast inserting suture anchor system with multiple configurations.

Available in PEEK or biocomposite material, the X-Twist Fixation System is designed for versatility across procedures:

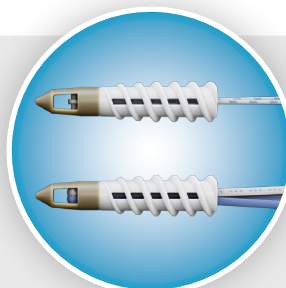
- Single or double row
- Medial and/or lateral row applications
- Knotless and fully knotted constructs



High Suture Tape Capacity

Simultaneously accommodates four 2mm tapes plus three #2 sutures in the distal PEEK eyelet

Maximize surface area compression, points of fixation, and load sharing to support a secure repair



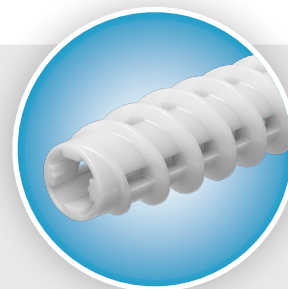
#2 Suture

Two 1.6mm Suture Tapes

Sliding Retention Sutures

Can be incorporated into repair or discarded

Anchor can be used like a traditional double-loaded anchor with multiple sliding 1.6mm suture tapes



Open Architecture Design

1.4mm vents run along four sides of the fully threaded anchor body

Enhance marrow element flow to support repair site healing and fixation site bony ingrowth



Unique X-Spline™ Drive

X-Spline drive provides two times the torsional efficiency of a traditional hex drive

Reliable insertion even in hard bone



Double Helix Design

Two independent threads in double helix relationship with high-threaded pitch

Faster insertion with 3 ¼ turns



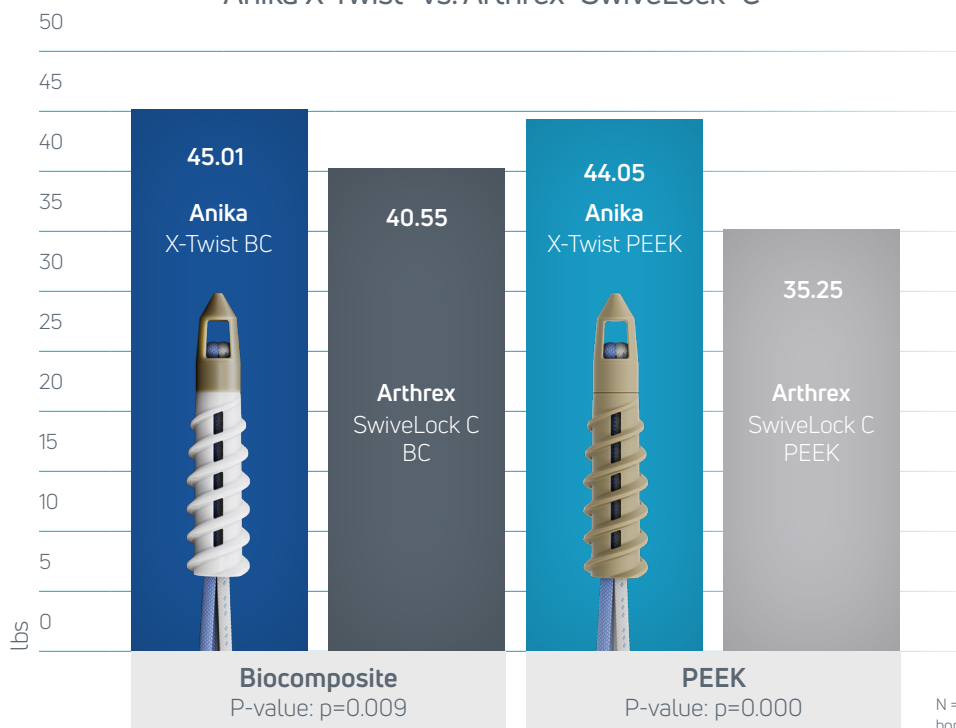
Multiple Material Choices

Choose from clinically proven materials; **PEEK** for strong, stable bio-inert fixation with a nonresorbable material or **biocomposite** (70% PLGA and 30% B-TCP) that promotes gradual bony ingrowth over time

Secure Fixation with Fully Threaded Design

X-Twist's fully threaded anchors provide purchase into cortical and cancellous bone, resulting in a strong, stable repair that resists micromotion and pullout.

PULL-OUT STRENGTH COMPARISON Anika X-Twist™ vs. Arthrex® SwiveLock® C



Anika X-Twist Biocomposite demonstrated:

12% stronger

pull-out strength than the Arthrex SwiveLock C biocomposite anchors

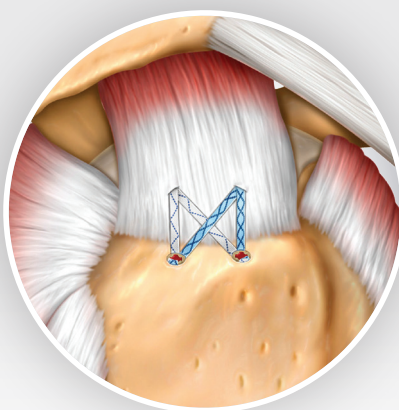
Anika X-Twist PEEK demonstrated:

25% stronger

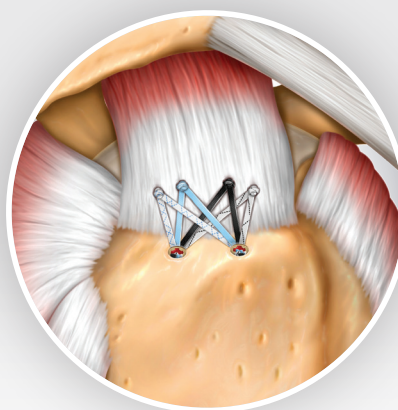
pull-out strength than the Arthrex SwiveLock C PEEK anchors

N = 8/product; Tensile strength testing completed in 10 lb/ft³ polyurethane foam bone block laminated with a 3mm thick 20 lb/ft³ polyurethane foam layer

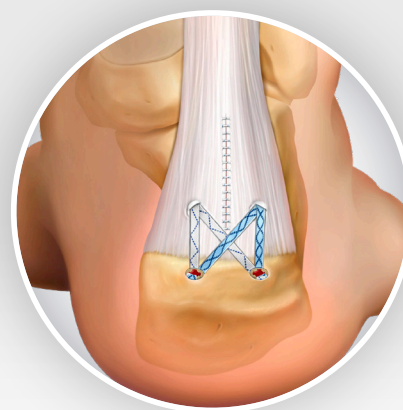
Multiple Repair Constructs



Double row knotless with two sets of 2mm suture tapes



Medially knotted with four sets of 1.6mm suture tapes and a knotless lateral row



Double row knotless Achilles repair with two sets of 2mm suture tapes

X-Twist Fixation System

X-Twist™ PEEK Screw-In Suture Anchors				
Part #	Diameter (mm)	Length (mm)	Description	Material
XT24700	4.75	23	X-Twist PEEK 4.75mm, w/one #2 suture (blu/wht)	PEEK
XT24702	4.75	23	X-Twist PEEK 4.75mm, w/two 1.6mm suture tapes (blu, blu/wht)	PEEK
XT24703	4.75	23	X-Twist PEEK 4.75mm, w/two 1.6mm suture tapes (blk, blk/wht)	PEEK
XT25500	5.5	23	X-Twist PEEK 5.5mm, w/one #2 suture (blu/wht)	PEEK
XT25502	5.5	23	X-Twist PEEK 5.5mm, w/two 1.6mm suture tapes (blu, blu/wht)	PEEK
XT25503	5.5	23	X-Twist PEEK 5.5mm, w/two 1.6mm suture tapes (blk, blk/wht)	PEEK
XT26200	6.25	23	X-Twist PEEK 6.25mm, w/one #2 suture (blu/wht)	PEEK



X-Twist Biocomposite Screw-In Suture Anchors				
Part #	Diameter (mm)	Length (mm)	Description	Material
XT44700	4.75	23	X-Twist Biocomposite 4.75mm, w/one #2 Suture (blu/wht)	Biocomposite
XT44702	4.75	23	X-Twist Biocomposite 4.75mm, w/two 1.6mm Suture Tapes (blu, blu/wht)	Biocomposite
XT44703	4.75	23	X-Twist Biocomposite 4.75mm, w/two 1.6mm Suture Tapes (blk, blk/wht)	Biocomposite
XT45500	5.5	23	X-Twist Biocomposite 5.5mm, w/one #2 Suture (blu/wht)	Biocomposite
XT45502	5.5	23	X-Twist Biocomposite 5.5mm, w/two 1.6mm Suture Tapes (blu, blu/wht)	Biocomposite
XT45503	5.5	23	X-Twist Biocomposite 5.5mm, w/two 1.6mm Suture Tapes (blk, blk/wht)	Biocomposite
XT46200	6.25	23	X-Twist Biocomposite 6.25mm, w/one #2 Suture (blu/wht)	Biocomposite



Suture Tape			
Part #	Size (mm)	Description	QTY/ Box
20032S	1.6	Parcus Braid® suture tape (wht/blu)	1
20034S	1.6	Parcus Braid suture tape (wht/blk)	1
20174S	1.6	Parcus Braid infinity loop (wht/blu) w/straight needle	1
20042	2	Parcus Braid suture tape (wht/blu)	6
20042S	2	Parcus Braid suture tape (wht/blu)	1
20238	2	Anika Braid suture tape (wht/blu)	12
20238S	2	Anika Braid suture tape (wht/blu)	1
20239	2	Anika Braid suture tape (blu)	12
20239S	2	Anika Braid suture tape (blu)	1
20240	2	Anika Braid suture tape (blk/blu)	12
20240S	2	Anika Braid suture tape (blk/blu)	1

X-Twist Instrumentation [^]			
Part #	Description	Sterile/ Non-sterile	Single-use/ Reusable
XT04700	X-Twist 4.75mm tap	Non-sterile	Reusable
XT04701	X-Twist 4.75-5.5mm awl	Non-sterile	Reusable
XT04702	X-Twist 3.6mm awl	Non-sterile	Reusable
XT04703	X-Twist 4.75mm tap, DEX*	Non-sterile	Reusable
XT04705	X-Twist 4.0mm drill, DEX*	Non-sterile	Reusable
XT04706	X-Twist 3.6mm drill, DEX*	Non-sterile	Reusable
XT05500	X-Twist 5.5mm tap	Non-sterile	Reusable
XT05501	X-Twist 5.5mm tap, DEX*	Non-sterile	Reusable
XT00001	X-Twist sterilization tray	Non-sterile	Reusable

[^]See IFU or Technique Guide for instrumentation guide by anchor size and bone quality
*DEX = Distal Extremity

Anika Therapeutics, Inc.

Parcus Medical, LLC
6423 Parkland Dr., Sarasota, FL 34243
1-877-746-2972 | ParcusCS@anika.com

www.anika.com | Anika. Restore Active Living.® | Stay Active®

This document and information is intended for markets where regulatory approval has been granted.
Anika, Parcus, Parcus Braid®, X-Spline, X-Twist, Stay Active, and Restore Active Living are trademarks and/or registered trademarks of Anika Therapeutics, Inc. and its affiliates in certain jurisdictions. All other trademarks are the property of their respective owners.

System designed and manufactured in the USA | Printed in the USA

©2024 Anika Therapeutics, Inc. All rights reserved.

AML-900-405 REV 02